

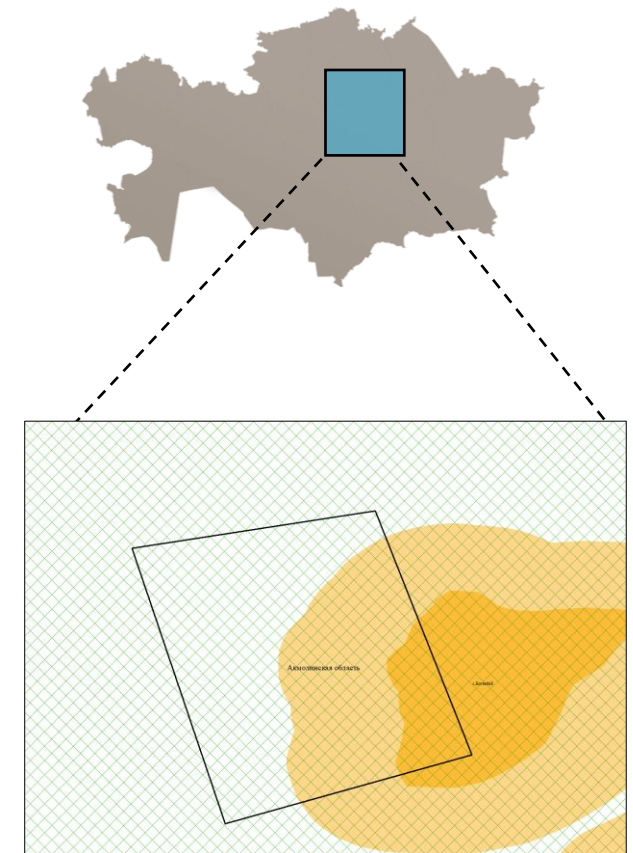
**Location:** located in the Ermentau district of the Akmola region, 4 km southwest of the village of Bogembay, 18 km east of the Aksu railway station.

**Brief geological characteristics:** the geological structure of the deposit includes terrigenous sedimentary deposits of the Lower Carboniferous age ( gray sandstones, siltstones, argillites, coal seams), which form a relatively small, synclinal structure (4x11 km), dissected by a tectonic fault into two troughs (Northern and Southern). According to the position in the section, lithological composition, fauna, and the nature of coal content, these deposits, by analogy with the Karaganda basin, are divided into three suites.

Industrial coal content is associated with the Karaganda suite, at the base of which one complex coal seam with a thickness of 1-5 m is established.

The seam consists of two layers, of which the lower one, 2.5 m thick, is of practical importance. The thickness of the upper layer sometimes increases from 0.6 m to 2 m, but it usually pinches out or is replaced by carbonaceous argillites. The maximum depth of the coal seam is 400 m.

The coals of the deposit are hard, humus, high-ash and very difficult to beneficiate. The ash content of the coal mass is 35-45%, the sulfur content is 1.0-1.5%, phosphorus is 0.01-0.02%, the combustion heat per combustible mass is 8000-8500 kcal/kg, the lower working fuel is 4500-5500 kcal/kg, the yield of volatiles is 20-22%. The coals are weakly sintered, the thickness of the plastic layer is 8-12 mm. They belong to the OS brand and are suitable only as energy fuel.



- the outline of the Bogembay deposit, included in the PUGFN for solid mineral extraction, for auction
- license for GIN
- settlement and buffer zone of the village of Bogembay

Extract from the state inventory records as of 01.01.2024.		
Useful component	Balance reserves	Off-balance sheet reserves
coal	A+B+C1 – 5134 thousand tons	14700 thousand tons